

SR915A 2-port Resonator

This product is lead-free in compliance with RoHs 2002/95/EC.

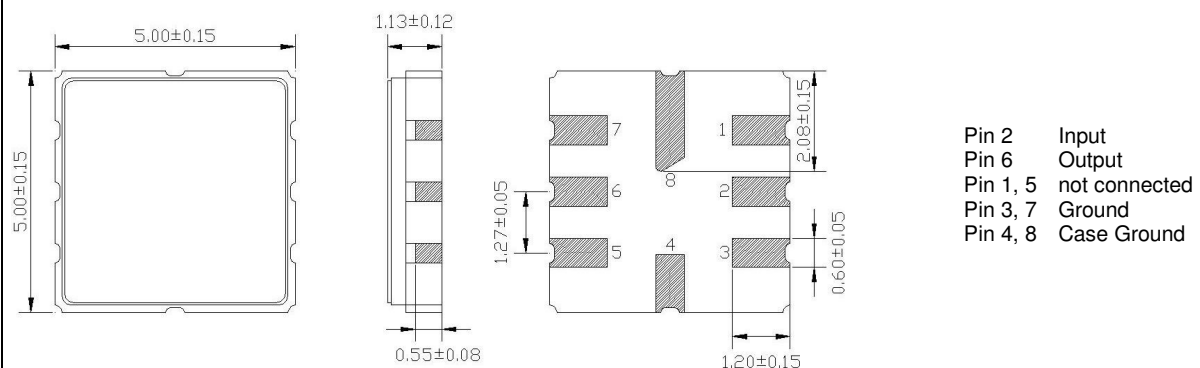
Test Conditions:

| | |
|---|-------------|
| RF power | 0 dBm |
| Temperature | 23 °C |
| DC Voltage | 0 V |
| Terminating source impedance (Z_S): | 50 Ω |
| Terminating load impedance (Z_L): | 50 Ω |

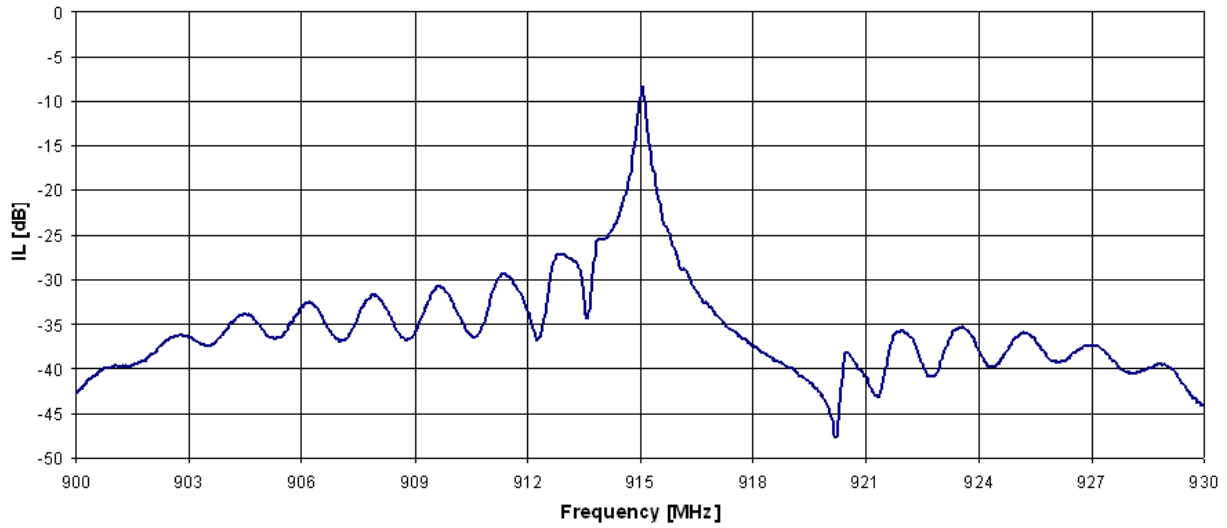
| | | minimum | typical | maximum | unit |
|--------------------------------------|--------|---------|---------|---------|--------------------|
| Centre frequency | f_C | 914.7 | 915 | 915.3 | MHz |
| Insertion Loss | I_L | | 8.0 | 9.0 | dB |
| Loaded quality factor | Q_L | 3600 | 4500 | | |
| Unloaded quality factor | Q_U | 6000 | 7500 | | |
| Ageing of center frequency | | | | 50 | ppm |
| Equivalent Circuit elements | | | | | |
| Motional capacitance | C_1 | | 0.216 | | fF |
| Motional inductance | L_1 | | 140.08 | | μ H |
| Motional resistance | R_1 | | 110 | | Ω |
| Parallel capacitance | C_0 | | 2.2 | | pF |
| Operating temperature range | | -40 | | +125 | °C |
| Storage temperature range | | -40 | | +125 | °C |
| Turnover temperature | T_0 | 15 | | 30 | °C |
| Temperature coefficient of frequency | TC_F | | -0.032 | | ppm/K ² |

Electrostatic Sensitive Device

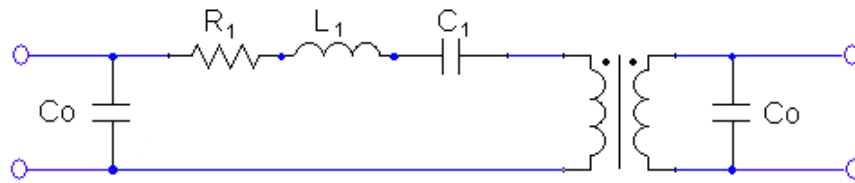
Package: S52 / 5.0*5.0mm²



Typical performance:



Equivalent Circuit:



| | | | |
|----|----------|----|-----------|
| Co | 2,2 pF | L1 | 140,08 μH |
| C1 | 0,216 fF | R1 | 110 Ohm |