

SF869U
Narrow Band Low Loss RF Filter for ISM Application
 This product is lead-free in compliance with RoHs 2002/95/EC.

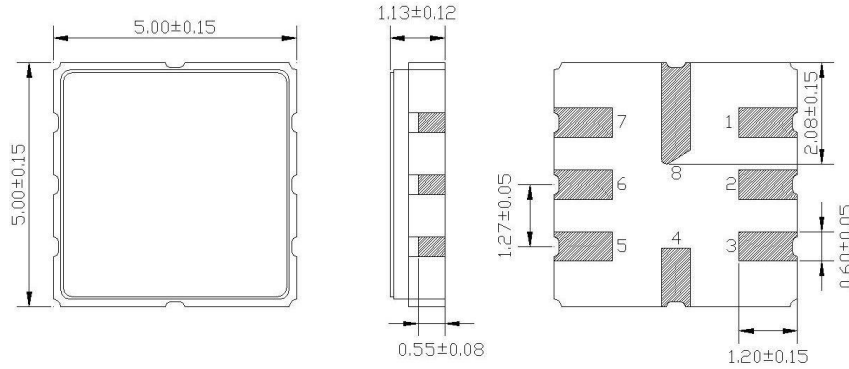
Test Conditions:

RF power	-10 dBm		
Temperature	23 °C		
DC Voltage	6 V		
Terminating source impedance (Z _S):	50 Ω	<input checked="" type="checkbox"/> Matching Required	
Terminating load impedance (Z _L):	50 Ω	<input checked="" type="checkbox"/> Matching Required	

	minimum	typical	maximum	unit
Centre frequency		868.69		MHz
Minimum Insertion Loss in Pass Band 868.215 MHz – 869.165 MHz		3.0	3.5	dB
Pass Band relative to IL _{min} 868.215 MHz – 869.165 MHz		1.5	3.0	dB
Rejection				
10 MHz – 600 MHz	55	60		dB
600 MHz – 750 MHz	45	50		dB
750 MHz – 860 MHz	38	45		dB
860 MHz – 863 MHz	30	35		dB
863 MHz – 866 MHz	20	25		dB
866 MHz – 867 MHz	15	22		dB
871 MHz – 872 MHz	15	22		dB
872 MHz – 880 MHz	25	32		dB
880 MHz – 1000 MHz	35	42		dB
1000 MHz – 1500 MHz	45	55		dB
RF Power			10	dBm
Operating temperature range	-40		+90	°C
Storage temperature range	-40		+90	°C
Impedance for matching Z _{IN}		260 1.0		Ω pF
Impedance for matching Z _{OUT}		260 1.0		Ω pF
Temperature coefficient of frequency		-0.032		ppm/K ²

Electrostatic Sensitive Device

Package: S52 / 5.0*5.0mm²

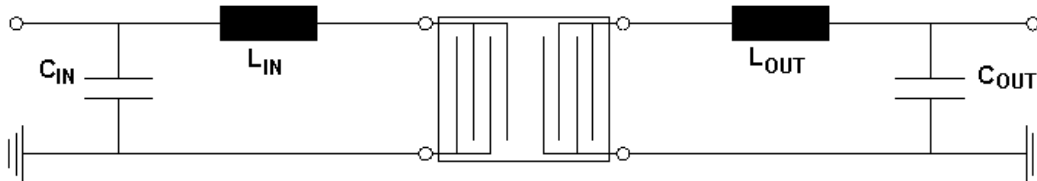


- Pin 2 Input
 - Pin 6 Output
 - Pin 1, 3 Input Ground
 - Pin 4, 8 Case ground
 - Pin 5, 7 Output Ground
- All dimensions in mm

Matching network to 50 Ω: ¹⁾

L_{IN} : 19nH
 C_{IN} : 2.2pF

L_{OUT} : 19nH
 C_{OUT} : 2.2pF



¹⁾ Matching elements are based on circuit with ideal components.
 Matching values may vary due to PCB layout and real components.

Typical performance:

